

# UM-C Motorized unit kit for changeover switch S5000F & CCF



230 Vac/dc  
**SSF Size 0 | UM T0** UM-C0A230Z  
**CCF Size 1 | UM T0** UM-C1A230Z

		120 Vac/dc	230 Vac/dc	277 Vac/dc
<b>CCF</b>	Size 2   <b>UM T2</b>	UM-C21120Z	UM-C21230Z	UM-C21277Z
	Size 3   <b>UM T3</b>	UM-C31120Z	UM-C31230Z	UM-C31277Z
<b>SSF</b>	Size 4   <b>UM T3</b>	UM-C35120Z	UM-C35230Z	UM-C35277Z

## Technical information



According to IEC/EN 60947-3



UM T0

Rated operational voltage		230Vac/dc
Frequency	Hz	50/60
Operating voltage range (based in our own tests)	$\Delta V$	0,85*V to 1,15*V
Operating voltage range according to IEC/EN 60947-6	$\Delta V$	0,95*V to 1,10*V
Cable of voltage supply	mm <sup>2</sup>	1,5 - 2,5
Cable section area Input Signals	mm <sup>2</sup>	0,5 - 1,5
Cable section area Auto-Lock mode Outputs	mm <sup>2</sup>	0,5 - 1,5
Inrush Current	A	1,1
Use current (I <sub>rms</sub> )	mA	45
Use current (I <sub>max</sub> )	mA	137
Protective Fuse (Ref. F1AL250V   Littelfuse)	A	1
Operating angle		-70° / 0° / +70° (I - 0 - II)
Number of UM T0 operations	Cycles	10000
Operation speed (0-I-II-0)	Cycles/hour	120
Operating temperature	RH90%	-25°C + 55°C
Transportation and storage temperature	RH90%	-40°C + 70°C
Weight	Kg	1,8

Pos.	Direction	Pos.	Operating time <sup>*(1)</sup>
0	→	I	0,75 sec
I	→	0	0,75 sec
0	→	II	0,75 sec
II	→	0	0,75 sec
I	→	II	1,5 sec
II	→	I	1,5 sec

<sup>\*(1)</sup> According to IEC/EN 60947-3 (based in our own tests)



UM T2-T3

		120Vac/dc	230Vac/dc	277Vac/dc
Rated operational voltage		120Vac/dc	230Vac/dc	277Vac/dc
Frequency	Hz		50/60	
Operating voltage range (based in our own tests)	$\Delta V$		0,85*V to 1,15*V	
Operating voltage range according to IEC/EN 60947-6	$\Delta V$		0,95*V to 1,10*V	
Cable of voltage supply	mm <sup>2</sup>		1,5 - 2,5	
Cable section area Input & MODBUS Signals	mm <sup>2</sup>		0,5 - 1,5	
Cable section area Outputs	mm <sup>2</sup>		0,5 - 1,5	
Inrush Current	A		17	
Nominal Current during operation UM T2	A	4,75	2,5	2,1
Nominal Current during operation UM T3	A	7,5	3,9	3,3
Use current (I <sub>rms</sub> )	A		0,041	
Use current (I <sub>max</sub> )	A		0,275	
Operation time CCF size 2 - UM T2	ms	180	168	174
Operation time SSF size 4   CCF C3 UM T3	ms	166	148	154
Number of UM T2 operations for CCF size 2 500 - 630A <sup>*(1) *(2)</sup>	Cycles		4000 / 10000	
Operation rate (0-I-II-0) for CCF size 2 500 - 630A <sup>*(1)</sup>	Cycles/hour		60 / 120	
Number of UM T2 operations for CCF size 2 800A <sup>*(1) *(2)</sup>	Cycles		2500 / 10000	
Operation rate (0-I-II-0) for CCF size 2 800A <sup>*(1)</sup>	Cycles/hour		20 / 120	
Number of UM T3 operations for SSF size 4   CCF size 3 <sup>*(1) *(2)</sup>	Cycles		2500 / 7000	
Operation rate (0-I-II-0) for SSF size 4   CCF size 3 <sup>*(1)</sup>	Cycles/hour		20 / 60	
Operating temperature	T/Un RH90%		-25°C + 55°C	
Transportation and storage temperature	RH90%		-40°C + 70°C	
Weight T2/T3	Kg		3,96 / 4,4	

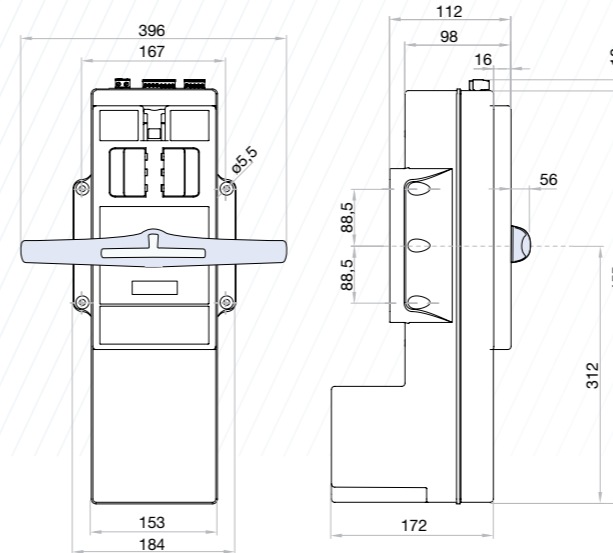
<sup>\*(1)</sup> According to IEC/EN 60947-3 / Based in our own tests

<sup>\*(2)</sup> Please consult us for more operations

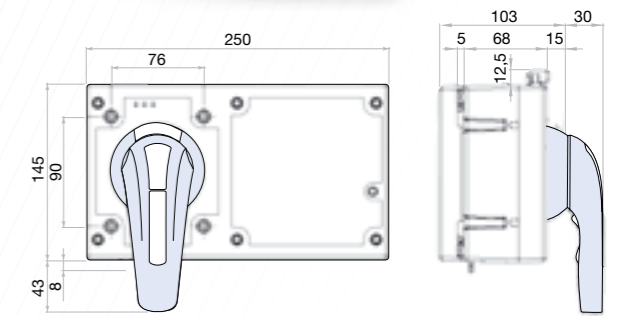
For inverted mounting there are references for **MU** with inverted frontal plates. Supply under request.

## Dimensions (mm)

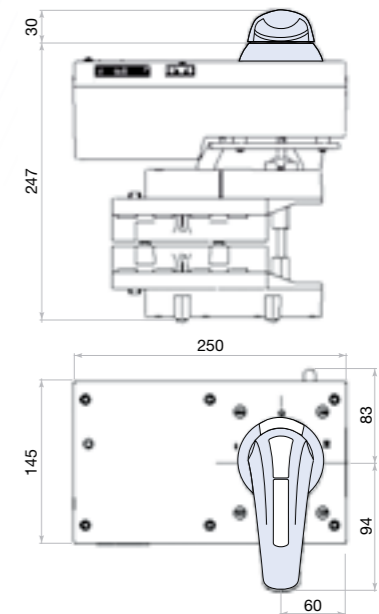
### UM T2-T3



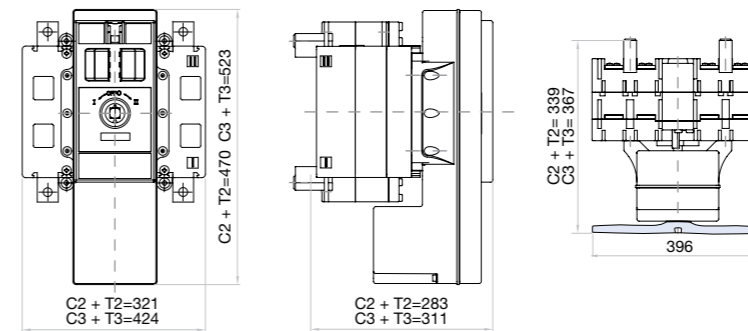
### UM T0



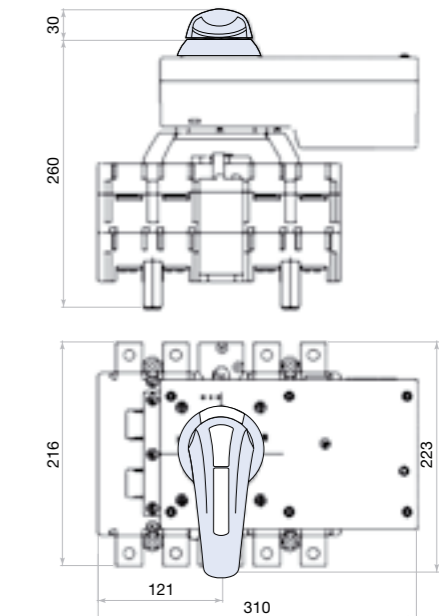
### S5000F size 0 + UM T0



### CCF size 2&3 + UM T2-T3



### CCF size 1 + UM T0



### S5000F size 4 + UM T3

